



## Azimut 43



### Description

Azimut 43, twin Cummins QSB 6 cylinder 425hp diesel engines, standard instrumentation and equipment plus 5kw generator, Raymarine E120 with repeater on flybridge, Raymarine autopilot with integrated Gyroplus, ST60, E240 VHF. The luxurious interior sleeps up to 6 in two cabins with ensuite plus saloon. This Azimut 43 includes exclusive decor, teak laid cockpit and bathing platform, carpet and curtains. She has been lightly used with only 80 hours on the engines. PART EXCHANGES CONSIDERED THROUGH OPAL MARINE PURCHASE DIRECT - CALL US NOW!

### Overview

- Price: € 399,000 inc. VAT
- Name: ALL HANDS ON DECK II
- Location: Ireland
- Year: 2009
- Length: 42 feet 4 inches
- Engines: Twin diesel
- Hull Material: Fiberglass

### Specification

Builder: Azimut  
Designer: Righini/Galeazzi

#### Tanks

Fuel: (290)  
Water: (132)  
Holding: (35)

#### Engines

Manufacturer: Cummins  
Model: QSB 5.9  
Hours: 80  
Cruising Speed: 26 knots  
Max Speed: 30 knots

#### Dimensions

LOA: 42 ft 4 in  
LWL: 41 ft 10 in  
Beam: 13 ft 10 in  
Draft: 4 ft 2 in  
Displacement: 15200 lbs

## Additional Information

### Mechanical

- 2 x Cummins QSB 5.9 6 cylinder 425hp diesel engines
- 5Kw generator
- Trim tabs
- Aluminium alloy 4 blade propellers
- 24V bow thruster

### Electrical

- 2 x batteries, for services and engines
- Battery charger
- 12V 10A battery charger for generator
- Shore power

### Navigation

- Raymarine E120 at main helm with repeater at flybridge
- Raymarine radar antenna
- Raymarine autopilot with Gyroplus integrated
- Raymarine ST60 Tridata display
- RAY240E DSC VHF radio with repeater on flybridge

### Deck

- Anti-slip tread on walkways
- 1000W, 24V windlass
- Anchor windlass controls
- 21kg anchor with 75m chain
- Chain and fender support locker
- Chain wash
- 2 x electric windscreen wipers
- 2 x steel cleats
- 2 x fairleads with stainless steel cleats
- Cockpit lockers
- Cockpit and stern platform lights
- Telescopic electro-hydraulic gangway in steel and teak, with additional remote control
- Teak laid cockpit floor
- Hot and cold cockpit shower
- Foldaway cockpit table
- Cockpit fridge
- Teak laid bathing platform
- Flybridge table
- Full set of controls on flybridge
- Cushioned sunbathing area
- Steel light and antenna mast
- Navigation lights
- Anti-slip tread mat
- Steel handrails
- Flagpole

### Canvas

- Cockpit and flybridge cushions
- Window and cushion covers
- Flybridge instrument covers

### Safety

- 3 x 24V electric bilge pumps, plus alarms
- 2 x manual emergency pumps
- Rapid engine room bilge draining
- Fire extinguisher in engine room
- Emergency panels located in the cockpit

### Interior/domestic

- Sleeps 6 in 2 cabins plus saloon
- Owner's cabin includes queen size bed, plenty of lighting and storage, cedar wood fittings, carpet and curtains
- Owner's ensuite with black glass fittings, shower and wood flooring

- Guest cabin with twin beds (can be pushed together to create double), lighting and storage, cedar wood fittings and ensuite (as owner's)
- Convertible sofa bed in saloon
- Exclusive decor
- Folding saloon table
- Carpet and curtains
- Radio/CD player with speakers (plus two external speakers)
- Dimmers
- Galley with black Granulon worktops and plenty of storage
- Large galley sink
- Double burner glass ceramic hotplate with guardrail
- Combimes microwave/oven
- 130 ltr fridge/freezer
- Pressurised water system
- 40 ltr boiler
- Macerator
- Cutlery and crockery for 6

### Disclaimer

Opal Marine Ltd. normally acts as a broker for the vendor who unless otherwise stated is not selling in the course of business. Whilst every care has been taken in the preparation of these particulars, the correctness is not guaranteed and they are intended as a guide only and do not constitute a part of any contract. A prospective buyer is strongly advised to check these particulars and, where appropriate, and at his/her own expense to employ a qualified marine surveyor to carry out a survey and/or have an engine trial conducted which, if conducted by us, should not imply any liability on our part.

Opal Marine Ltd. does not arrange demonstrations or accept any responsibility for demonstrations or viewings, whether accompanied or unaccompanied.



Azimut 43 - Cockpit



Azimut 43 - Bathing Platform



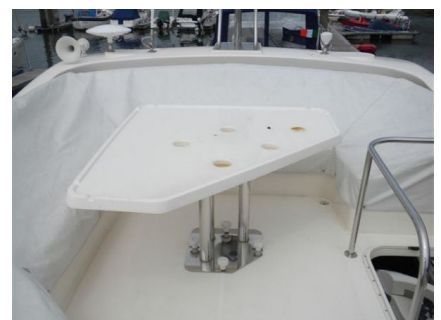
Azimut 43 - Stern



Azimut 43 - Cockpit Seating



Azimut 43 - Sliding Doors to Saloon



Azimut 43 - Flybridge Table



**Azimut 43 - Flybridge Sun Cashions**



**Azimut 43 - Saloon Table**



**Azimut 43 - Guest Ensuite**



**Azimut 43 - Foredeck**



**Azimut 43 - Hob and Sink**



**Azimut 43 - Shower**



**Azimut 43 - Upper Saloon Seating**



**Azimut 43 - Galley**



**Azimut 43 - Upper Saloon**



**Azimut 43 - Twin Guest Berth**



**Azimut 43 - Owner's Double Berth**



**Azimut 43 - Lower Saloon Seating**



Azimut 43 - Owner's Cabin Port



Azimut 43 - Companionway



Azimut 43 - Owner's Cabin Starboard



Azimut 43 - Saloon Looking Aft



Azimut 43 - TV



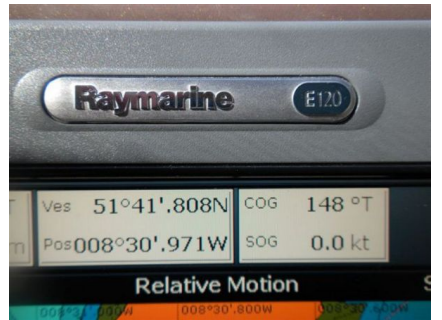
Azimut 43 - Helm Position



Azimut 43 - Helm Steps



Azimut 43 - Helm



Azimut 43 - Raymarine E120



Azimut 43 - Owner's cabin Ensuite Shower



Azimut 43 - Windscreen



Azimut 43 - Instruments



Azimut 43 - Owner's Cabin Ensuite



**Azimut 43 - Instruments**



**Azimut 43 - Controls**



**Azimut 43 - Display**