



## Ferretti 681



### Description

2008 Ferretti 681 flybridge motoryacht with a huge range of extras. Comprehensive navigation equipment, accessible from cockpit and flybridge in addition to the main control centre. The luxurious accomodation on this Ferretti 681 includes a Master cabin, VIP cabin, 2 x Guests' cabins plus 2 crew cabins, all with air conditioning.

### Overview

- Price: € 2,150,000 ex. VAT
- Name: DREAMS
- Location: Istanbul, Turkey
- Year: 2008
- Length: 69 feet 7 inches
- Engines: Twin diesel
- Hull Material: Fiberglass

### Specification

Builder: Ferretti

#### Tanks

Fuel: (879)  
Water: (202)

#### Engines

Manufacturer: Man  
Model: V12

#### Dimensions

LOA: 69 ft 7 in  
LWL: 58 ft 5 in  
Beam: 18 ft 6 in  
Draft: 5 ft 8 in  
Displacement: 106400 lbs

# Additional Information

## Mechanical

- 2 x Man V12 1360hp diesel engines
- Extractor for propellor
- Anti Rolling Gyro stabilisers

## Electrical

- Kohler 20000W diff from 11000W generator
- Kohler 13000W auxilliary generator
- Mastervolt Sine Wave inverter/battery charger
- Stern thruster 13.1hp electric (double propellor)
- Bow thruster 20hp
- Gi 8 computer remote system for all systems on board

## Navigation

- Fibreglass radar mast for antenna raising
- Monitor in flybridge
- ST60 indicator speed and wind direction in main bridge
- Furuno NX-300 DUAL frequency Navtex receiver display
- ARPA Furuno ARP 11 radar + PG1000 sensor
- Raymarine ST-60 (speed-echo-wind) multi-data indicator repeater in cockpit control station
- Furuno FR1934 B Box navnet radar with open array in main bridge
- 2 x echosounders, 1 x 100m forward looking
- Panasonic TD30 telephone system
- TV SAT + V-SAT Radio Marine 60 twin dome antennas
- GSM/GPRS voice/fax telephone interface
- Flap angle indicator on flybridge

## Deck

- 50kg starboard anchor plus 125m chain
- 30kg port anchor plus 80m chain
- Stainless steel bimini top on flybridge
- Control station on starboard stern
- Hydraulic swim ladder
- Comprehensive lighting throughout, including underwater Xenon lights
- Plug with remote control for electrohydraulic davit
- Side opening pulpit
- Remote control for electrohydraulic gangway
- Hydraulic side gate
- Shore fresh water intake
- Steps towards platform in teak
- Zodiac Pro-Jet tender (4 people)
- Jetski fitting on the flybridge
- Flybridge BBQ and fridge
- Bose system with waterproof speakers on flybridge and for the first deck stern
- Name in stainless steel letters on the transom
- 6 cameras with monitors controlled from the bridge

## Safety

- Electronically controlled searchlight
- Alarm system via GSM
- EPIRB emergency locator with ACR GPS
- CCTV system with monitors in crew cabin, main bridge, engine room, cockpit
- Additional cameras on the sidewalks and in the flybridge
- Smoke alarms in all cabins

## Interior/domestic

- Air conditioning throughout boat
- 4 x cabins - master, VIP, 2 x Guest cabins
- Additional 2 crew cabins

- All cabins have TV installations including SAT receiver interfaces, and CD/DVD
- Master cabin has LCD 26" TV with Bose hi-fi virtual surround digital system
- Master bathroom shower has mosaic walls
- Saloon includes 42" LCD TV and Bose Hi-Fi surround Dolby digital
- Kitchen equipped with Bosch Gourmet oven and microwave
- Bosch dishwasher
- GE fridge with water/ice dispenser
- Freezer beneath corridor floor (92ltrs)
- Washer
- Drier
- Watermaker
- Ice maker with independent water tank
- Waste mincer
- Aspirator

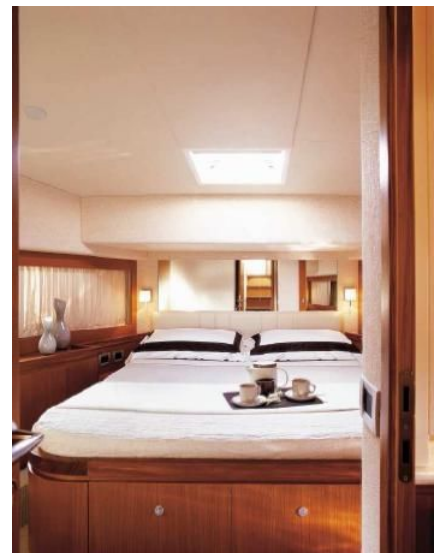
## Disclaimer

Opal Marine Ltd. normally acts as a broker for the vendor who unless otherwise stated is not selling in the course of business. Whilst every care has been taken in the preparation of these particulars, the correctness is not guaranteed and they are intended as a guide only and do not constitute a part of any contract. A prospective buyer is strongly advised to check these particulars and, where appropriate, and at his/her own expense to employ a qualified marine surveyor to carry out a survey and/or have an engine trial conducted which, if conducted by us, should not imply any liability on our part.

Opal Marine Ltd. does not arrange demonstrations or accept any responsibility for demonstrations or viewings, whether accompanied or unaccompanied.



Saloon



Master Cabin



Dining Area



Dining Area



Galley



Helm



Flybridge



Stern Controls



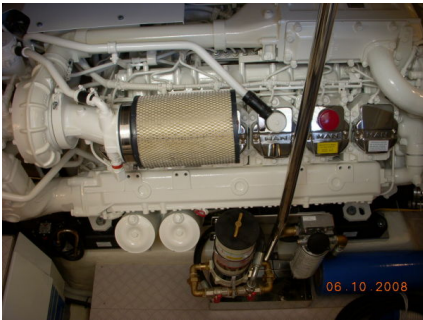
Helm



Starboard Quarter



Aft Deck



Engines



At Night



Stern



In Berth



Layout



Stern