



## C&C 39



### Description

C&C 39 Classic cruiser/racer with 2 cabins providing 7-8 berths. New J-Prop propeller fitted in 2004, new engine fitted in 2006, new exhaust and full exterior refit in 2008, but retaining the original Barient Chicome winches. Fully-integrated B&G Network navigation instruments and autopilot, with remote mike in cockpit. PART EXCHANGES CONSIDERED THROUGH OPAL MARINE PURCHASE DIRECT - CALL US NOW!

### Overview

- Price: £95,000
- Name: BY AND BY
- Location: Punta Ala, Italy
- Year: 1971
- Length: 39 feet 2 inches
- Engines: Single diesel
- Hull Material: Fiberglass

### Specification

Builder: C&C  
Designer: Cuthbertson & Cassian

#### Tanks

Fuel: (22)  
Water: (83)

#### Engines

Manufacturer: Lombardini  
Hours: 350  
Cruising Speed: 6 knots  
Max Speed: 8 knots

#### Dimensions

LOA: 39 ft 2 in  
LWL: 32 ft 4 in  
Beam: 11 ft 5 in  
Draft: 6 ft 3 in  
Displacement: 16976 lbs

## Additional Information

### Mechanical

- 1 x Lombardini 40hp diesel engine
- New engine fitted in 2006, last serviced in 2008

### Electrical

- 4 batteries + 15/20 amps/hr charger
- Shore power
- Inverter

### Spars/rigging/sails

- Bermudan Sloop rig
- Aluminium spars (2001)
- Standard rigging
- Running rigging
- Mainsail reefing - 3 reefs
- Furlex head furling
- Spinnaker pole
- Baby stay and running stays
- Main, Genoa and Spinnaker from Hyde Sails (2008 - Spi never used)
- Full batten main
- 130% Genoa
- 2001 Ullman staysail

### Navigation

- JRC 1000 radar
- SEIWA GPS
- SEIWA chart plotter
- B&G Autopilot
- B&G Echo Sounder
- B&G Log Speed and Wind Indicator
- Standard Horizon VHF radio with remote mike in cockpit
- Danforth compass
- B&G instruments fully integrated

### Deck

- Teak deck
- Anchor locker
- 2 x anchors + 50 metres chain
- Lofrans anchor windlass
- 10 x Barient winches
- Pushpit
- Pulpit
- Boarding ladder
- Cockpit/deck shower
- Cockpit table

### Canvas

- Sailcover
- Cockpit cushions
- Awning

### Safety

- Liferaft - 8 people
- Floating lights
- Flares
- Foghorn
- Radar reflector
- Lifebuoys
- Danbuoy
- 3 x Bilge pumps

### Interior/domestic

- 2 cabins providing 7-8 berths
- Wood flooring
- Curtains and upholstery
- Chart table
- Saloon table
- Hanging lockers x 2
- Wet locker

- Webasto heating
- Hand pump toilet
- Shower
- Cooker with grill and oven
- Refrigerator and freezer
- Stereo
- Hot water

### Miscellaneous

- Dinghy
- Outboard
- West System Antiosmosis treatment in 2003

### Owners Comments

"I am the fourth owner and bought the boat in 2006 - last survey in 2006. Full exterior refit in 2008 (hull and deck). Classic cruiser/racer, very fast when she was built.

### Disclaimer

Opal Marine Ltd. normally acts as a broker for the vendor who unless otherwise stated is not selling in the course of business. Whilst every care has been taken in the preparation of these particulars, the correctness is not guaranteed and they are intended as a guide only and do not constitute a part of any contract. A prospective buyer is strongly advised to check these particulars and, where appropriate, and at his/her own expense to employ a qualified marine surveyor to carry out a survey and/or have an engine trial conducted which, if conducted by us, should not imply any liability on our part.

Opal Marine Ltd. does not arrange demonstrations or accept any responsibility for demonstrations or viewings, whether accompanied or unaccompanied.



Photo 4



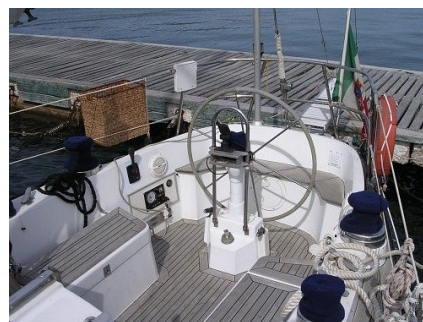
GALLEY



FOREPEAK



STERN



COCKPIT



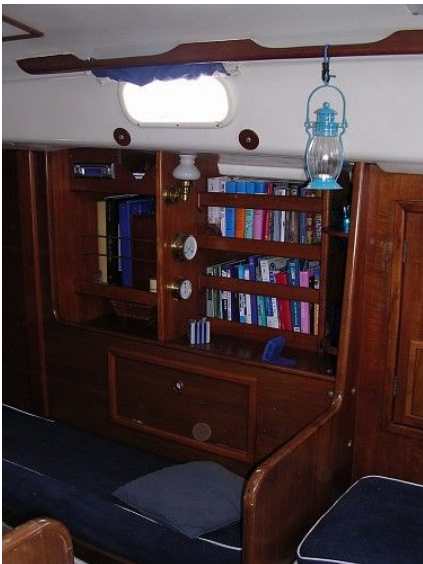
**QUARTERBERTH**



**CHART TABLE**



**SALOON**



**SHELVING**